

# HAMPSHIRE SAFEGUARDING CHILDREN PARTNERSHIP

---

TRAINING BROCHURE

2024/25



Hampshire  
**Saf**eguarding  
**Ch**ildren  
Partnership



Multi-Agency Training Courses

# MULTI-AGENCY TRAINING PROGRAMME



## HSCP Training Offer 2024/25

Hampshire Safeguarding Children Partnership (HSCP) is excited to update the 2024/25 offer for its multi-agency training programme. Since its inception, the online aspect of this training has developed substantially, with over 33,960 training sessions being accessed and 13,955 delegates having registered for a training account. Feedback received has highlighted high delegate satisfaction with the accessibility of training and subject knowledge of the trainers.

*“Extremely informative, lots of information on a fast-changing area which I can share with my team and my clients.”*

*“It was well organised and presented, with a good number of questions to learners to maintain engagement.”*

*“Very stimulating and thought-provoking session; appreciated the videos and links to other resources.”*

*“Well organised, clear and interesting. The right pace for everyone and a variety of different information covered.”*

**Courses are provided free of charge to all professionals working with families and children who live in the Hampshire local authority area.**

## What courses do you offer?

HSCP offers a wide variety of fully-funded multi-agency events, including virtual courses, face-to-face courses, webinars, workshops and eLearning materials. These events bring professionals together to develop knowledge and skills and emphasise the benefits of working together to deliver positive outcomes for children and families.

## How can I book on HSCP training?

Courses are available to browse and book on the [HSCP Events Booking Page](#). Each member of staff wishing to attend multi-agency safeguarding training must hold an account. New accounts can be set up on the [Registration](#) section of the Events Booking Page. **Please note that you cannot book multiple tickets for the same course or book on another person's behalf; an individual account needs to be created for each person that is attending the training.**

It is important, when setting up an account, that staff select the correct sector and organisation from the drop-down menu. If your organisation is not listed, please contact [hscpevents@hants.gov.uk](mailto:hscpevents@hants.gov.uk).

---

# MULTI-AGENCY TRAINING PROGRAMME

---



Hampshire  
**Safe**guarding  
**Children**  
Partnership

**All organisations working with children and families are responsible for ensuring that their staff and volunteers are confident and competent in carrying out their responsibilities for safeguarding children.**

Staff should have access to appropriate development opportunities to ensure they have the knowledge and skills to identify and respond to abuse and neglect. HSCP will hold agencies to account in their efforts to ensure that all staff and volunteers working with children and/or their parents/carers are trained in safeguarding to an appropriate level.

**HSCP commissions and delivers multi-agency events to complement in-house training.**

Staff should determine, with their line manager, the courses best suited to their role or those which they are required to attend.

## **Multi-Agency Safeguarding Events**

Multi-agency training supports professionals in developing a shared understanding of decision making in respect of safeguarding children. Multi-agency events bring professionals together to develop knowledge and skills, emphasising the benefits of working together to deliver positive outcomes for children and families.

**HSCP'S TRAINING PROGRAMME IS SUPPORTED BY ITS PARTNER AGENCIES AND IS PROVIDED FREE TO:**

- Hampshire County Council (all departments)
- Hampshire & IOW Constabulary
- Hampshire & IOW Integrated Care Board
- Commissioned Health Providers
- Maintained, Academy and Independent Primary, Secondary and Special Schools
- Post-16 Colleges
- Early Years Providers
- District / Borough / City Councils (including commissioned services)
- Hampshire Fire & Rescue
- National Probation Service
- NHS England
- Winchester Diocese
- Portsmouth Diocese
- CAF/CASS
- A number of free spaces are allocated to voluntary sector and sporting organisations

Courses are certificated once an evaluation is completed by the delegate.

**Email address for training enquiries:**

[HSCPEVENTS@HANTS.GOV.UK](mailto:HSCPEVENTS@HANTS.GOV.UK)

---

# CONTENTS

---

## TRAINING PROGRAMME - WEBINARS

### A MULTI-AGENCY APPROACH TO SAFEGUARDING

- [Preparing for Child Protection Conferences](#)
- [An Introduction to the Trauma Informed Journey](#)
- [Protecting Childhood: Keeping Child Focused](#)
- [MAPPA](#)
- [eLearning: An Introduction to Safeguarding for People Who Visit Homes \(Non-Safeguarding Professionals\)](#)
- [eLearning: An Introduction to Community Partnership Information \(CPI\) Forms](#)
- [eLearning: Community and Voluntary Organisations Toolkit eLearning](#)
- [eLearning: Information Sharing Advice for Safeguarding Practitioners](#)
- [eLearning: An Introduction to District/ Borough/ City \(Tier 2\) Community Safety Partnerships](#)
- [eLearning: Introduction to Hampshire Safeguarding Children Partnership](#)
- [eLearning: Managing Allegations and Working with the LADO](#)
- [eLearning: Professional Challenge and Escalation](#)
- [eLearning: Record Keeping](#)
- [eLearning: Advanced – Child Death Overview Panel and Child Death Reporting](#)

---

### ADOPTING A FAMILY APPROACH

- [An Introduction to Adopting A Family Approach](#)
- [An Introduction to Emotionally Unstable Personality Disorder](#)
- [An Introduction to Identifying and Supporting Young Carers](#)
- [Housing and Homelessness Prevention](#)
- [Families Who Move Across County Borders](#)
- [Supporting Children of Substance Misusing Parents](#)
- [An Introduction to Supporting Families in the Armed Forces](#)
- [Suicide Prevention Awareness Training](#)
- [eLearning: An Introduction to Private Fostering](#)
- [eLearning: HIPS and 4LSAB Family Approach Toolkit](#)
- [eLearning: Strengthening Parental Relationships Toolkit](#)
- [eLearning: Talk Parental Relationships \(Strengthening Parental Relationships\)](#)

---

### CHILD-ON-CHILD ABUSE

- [An Introduction to Child-on-Child Abuse](#)
  - [eLearning: Child on Child Abuse Toolkit](#)
-



---

# CONTENTS

---

## TRAINING PROGRAMME - WEBINARS

### CHILD SEXUAL ABUSE

- [An Introduction to Child Sexual Abuse](#)
  - [An Introduction to Harmful Sexual Behaviour](#)
  - [Medical Assessments in Suspected Child Sexual Abuse](#)
  - [Child Sexual Abuse Strategy \(One Year On\) – A Hampshire Approach](#)
  - [Spotting the Signs and Indicators of Child Sexual Abuse](#)
  - [Speaking to Children About Child Sexual Abuse](#)
  - [eLearning: An Introduction to the HIPS Sexual Abuse Strategy and Toolkit](#)
  - [eLearning: Brook Traffic Light Tool](#)
- 

### DOMESTIC ABUSE

- [The Impact of Domestic Abuse on Children and Young People](#)
  - [Recognising and Responding to Perpetrators of Domestic Abuse](#)
  - [An Introduction to Child and Adolescent to Parent Violence \(CPV/APV\)](#)
  - [Post Separation Abuse – Using the Courts and Child Contact Arrangements](#)
  - [Recognising and Responding to Coercive Controlling Behaviour](#)
  - [An Introduction to Economic Abuse](#)
  - [An Introduction to Stalking and Cyber Stalking](#)
  - [Responding Well to Disclosures of Domestic Abuse](#)
  - [An Introduction to Risk Assessment and DASH Risk Indicator Checklist](#)
  - [An Introduction to the Homicide Timeline](#)
  - [Recognising and Responding to People of Diverse Ethnic and Cultural Backgrounds who are Victims/ Survivors of Domestic Abuse](#)
  - [Recognising and Responding to Domestic Abuse in LGBTQ+ Relationships](#)
  - [Recognising and Responding to Disability and Life Limiting Illness and Domestic Abuse](#)
  - [Recognising and Responding to Male Victim-Survivors of Domestic Abuse](#)
  - [eLearning: An Introduction to Differentiating Between Parental Conflict and Domestic Abuse](#)
  - [eLearning: Domestic Abuse Toolkit](#)
- 

### HARMFUL PRACTICES

- [An Introduction to ‘Honour’ Based Abuse, Forced Marriage and Dowry](#)
  - [An Introduction to Female Genital Mutilation](#)
  - [An Introduction to Child Abuse Linked to Faith and Belief](#)
  - [An Introduction to Breast Ironing](#)
- 

### KEEPING CHILDREN SAFE ONLINE

- [An Introduction to Keeping Children Safe Online](#)
- [An Introduction to the Risks Associated with Gaming and Gambling in Under 18s.](#)



# CONTENTS

---

## TRAINING PROGRAMME - WEBINARS

### LEARNING FROM REVIEWS

- [Learning From Reviews 2024/25](#)
  - [Unpacking Disguised Compliance – The Importance of Professional Curiosity](#)
  - [An Introduction to Having Honest Conversations](#)
  - [An Introduction to Fabricated or Induced Illnesses](#)
  - [An Introduction to ARFID \(Avoidant Restrictive Food Intake Disorder\)](#)
  - [eLearning: An Introduction to Child Safeguarding Practice Reviews](#)
  - [eLearning: Learning From Reviews Toolkit](#)
  - [eLearning: Analysis of Risk](#)
  - [eLearning: An Introduction to Safeguarding Supervision](#)
- 

### MISSING AND CHILD EXPLOITATION

- [Missing, Exploited and Trafficked Children \(MET\)](#)
  - [Children Who Go Missing from Home/Care](#)
  - [Child Exploitation - As a Health Professional, What Do You Need to Know?](#)
  - [An Introduction to the Child Exploitation Risk Assessment Framework \(CERAF\)](#)
  - [An Introduction To Trafficking and the National Referral Mechanism](#)
  - [eLearning: Child Exploitation Toolkit eLearning](#)
- 

### NEGLECT

- [Understanding, Identifying and Responding to Neglect](#)
  - [Understanding Cumulative Harm and Preventing the Normalisation of Neglect](#)
- 

### PREVENT

- [Prevent](#)
  - [eLearning: Prevent Toolkit](#)
- 

### SAFEGUARDING ADOLESCENTS

- [Safeguarding Adolescents in Hampshire and the Isle of Wight](#)
- 

### SAFEGUARDING AND CHILD DEVELOPMENT

- [Learning From Reviews - Safeguarding Children with Complex Health Needs](#)
- [Safeguarding Disabled Children \(Including Children with a Learning Disability\)](#)
- [An Introduction to the Impact of Developmental Trauma on Children and Young People](#)





# CONTENTS

---

## TRAINING PROGRAMME – WEBINARS

### **SAFEGUARDING UNDER ONES**

- [An Introduction to Safeguarding Infants](#)
  - [An Introduction to Safe Sleep](#)
  - [An Introduction to Perinatal Mental Health and the Impact on the Child](#)
  - [An Introduction to the Importance of Engaging with Fathers and the Impact of Paternal Mental Health on Children and Families](#)
  - [eLearning: ICON – Abusive Head Trauma Prevention Programme](#)
  - [eLearning: Keeping Our Children Safe From Button Batteries](#)
  - [eLearning: Safeguarding Infants Toolkit](#)
- 

### **SERIOUS VIOLENCE**

- [An Introduction to the Serious Violence Duty](#)
- 

### **UNDERSTANDING UNIDENTIFIED ADULTS**

- [Unidentified Adults](#)
- [eLearning: Understanding Unidentified Adults Toolkit](#)
- [eLearning: Understanding Unidentified Adults](#)



Hampshire  
Safeguarding  
Children  
Partnership

# A MULTI-AGENCY APPROACH TO SAFEGUARDING

---

Preparing For Child Protection Conferences

An Introduction to the Trauma Informed Journey

Protecting Childhood – Keeping Child Focused

MAPPA

eLearning: An Introduction to Safeguarding for People Who Visit Homes (Non-Safeguarding Professionals)

eLearning: An Introduction to Community Partnership Information (CPI) Forms

eLearning: Community and Voluntary Organisations Toolkit eLearning

eLearning: Information Sharing Advice for Safeguarding Practitioners

eLearning: An Introduction to District/ Borough/ City (Tier 2) Community Safety Partnerships

eLearning: Introduction to Hampshire Safeguarding Children Partnership

eLearning: Managing Allegations and Working with the LADO

eLearning: Professional Challenge and Escalation

eLearning: Record Keeping

eLearning: Advanced – Child Death Overview Panel and Child Death Reporting



# A MULTI-AGENCY APPROACH TO SAFEGUARDING

PREPARING FOR CHILD PROTECTION  
CONFERENCES - ICPC WORKSHOP



Hampshire  
**Safeguarding**  
**Children**  
Partnership

New For  
2024/25

**Delivered by:** Independent Reviewing Officer  
**Delivery method:** Face to Face  
**Duration:** Half Day

## LEARNING OUTCOMES

- Describe the purpose and process of Child Protection Conferences, Child In Need meetings and Early Help
- Be able to explain one's own responsibilities when attending Child Protection Conferences
- Be able to explain one's own responsibilities regarding any subsequent Child Protection or Child In Need planning
- To understand an Initial Child Protection Conference as a mechanism to share and evaluate information in a multi-disciplinary setting
- To understand the thresholds for decision making in a Child Protection Conference and how to present one's own rationale for decision making

PLEASE CLICK ON THE LINKS BELOW TO BOOK YOUR PLACE NOW

**BOOK ON:**

[THURSDAY 28 NOVEMBER 2024 09.30 – 12.30](#)

[TUESDAY 11 MARCH 2025 09.30 – 12.30](#)

# A MULTI-AGENCY APPROACH TO SAFEGUARDING

## AN INTRODUCTION TO THE TRAUMA INFORMED JOURNEY



Hampshire  
**Safeguarding**  
**Children**  
Partnership

**Delivered by:** Hampshire and Isle of Wight Constabulary  
**Delivery method:** Virtual  
**Duration:** 1.5 hours

### LEARNING OUTCOMES

- Explore categories of ACEs and direct experiences that affect the child directly and indirectly
- Explore triggers that can result in challenging behaviour
- Review the underpinning principles of Trauma Informed Practice that will help us to develop curiosity when managing our own and other's behaviour to support building resilience
- Provide an overview of the Pan-Hampshire trauma informed journey

PLEASE CLICK ON THE LINKS BELOW TO BOOK YOUR PLACE NOW

**BOOK ON:**

[WEDNESDAY 26 FEBRUARY 2025 19:00 – 20:30](#)

# A MULTI-AGENCY APPROACH TO SAFEGUARDING

PROTECTING CHILDHOOD – KEEPING CHILD  
FOCUSED



Hampshire  
**Safeguarding**  
**Children**  
Partnership

New For  
2024/25

**Delivered by:** The Willow Team

**Delivery method:** Virtual

**Duration:** 1 hour

## LEARNING OUTCOMES

- To understand the term 'adultification' and the impacts of this.
- To understand the mechanisms of child/victim blaming language.
- To consider the impact of adultification and child/victim blaming language.
- To look at key examples and how we can make changes. To know where professionals can access resources to support best practice.

PLEASE CLICK ON THE LINKS BELOW TO BOOK YOUR PLACE NOW

**BOOK ON:**

[WEDNESDAY 06 NOVEMBER 2024 12:00 – 13:00](#)

[WEDNESDAY 12 MARCH 2025 12:00 – 13:00](#)

# A MULTI-AGENCY APPROACH TO SAFEGUARDING

M A P P A



Hampshire  
**Saf**eguarding  
**Ch**ildren  
Partnership

**Delivered by:** MAPPA Coordinator

**Delivery method:** Virtual

**Duration:** 1.5 hours

## LEARNING OUTCOMES

- Understand the categories of MAPPA offenders
- Understand the three levels of MAPPA management
- Increase understanding of how the police and National Probation Service manage offenders
- Understand the process of Disclosure including limitations
- Understand how practitioners from all agencies can contribute to multi agency risk management plans and become familiar with four pillars risk management planning

PLEASE CLICK ON THE LINKS BELOW TO BOOK YOUR PLACE NOW

**BOOK ON:**

[WEDNESDAY 15 JANUARY 2025 09:30 – 11:00](#)

# A MULTI-AGENCY APPROACH TO SAFEGUARDING



Hampshire  
**Safeguarding**  
**Children**  
Partnership

## E-LEARNING COURSES

| Course   | Course Description  |
|--|---|
| <a href="#">eLearning: An Introduction to Safeguarding for People Who Visit Homes (Non-Safeguarding Professionals)</a> | This e-learning is designed for any person who visits someone's home to carry out their job, this could be maintenance worker, a local council officer or a social housing employee.  |
| <a href="#">eLearning: An Introduction to Community Partnership Information (CPI) Forms</a>                            | The CPI form is a way of safely telling the Police about information that you believe is pertinent to your role, your patients, caseload, or clients. This information does not relate to a crime, but you might feel police ought to know about it.  |
| <a href="#">eLearning: Community and Voluntary Organisations Toolkit eLearning</a>                                     | This eLearning provides an overview of the Community and Voluntary Organisations Toolkit. It can be undertaken by any professional working with families in Hampshire.  |
| <a href="#">eLearning: Information Sharing Advice for Safeguarding Practitioners</a>                                   | Information sharing is essential for identifying patterns of behaviour, or circumstances in a child's life that may indicate that they are at risk of harm and need some form of support or protection. This eLearning course aims to support practitioners in understanding and being confident to share information for the purpose of safeguarding children. |
| <a href="#">eLearning: An Introduction to District/ Borough/ City (Tier 2) Community Safety Partnerships</a>           | This eLearning aims to outline the statutory function of both Community Safety Partnerships and Community Safety Teams within Tier 2 local authorities. It will provide an insight into how Community Safety might underpin collaborative working practices to support a range of other key local authority, voluntary and housing partners.                    |

# A MULTI-AGENCY APPROACH TO SAFEGUARDING



Hampshire  
**Safeguarding**  
**Children**  
Partnership

## E-LEARNING COURSES

| Course   | Course Description   |
|--|--|
| <a href="#">eLearning: Introduction to Hampshire Safeguarding Children Partnership</a>     | Partnership professionals from health, education, social care and third sectors organisations who interact with children living in Hampshire, particularly those who are new to an organisation to support induction activity.   |
| <a href="#">eLearning: Managing Allegations and Working with the LADO</a>                  | This course introduces the role of the LADO and how to manage and deal with allegations. The course is suitable for staff of non-statutory employers, particularly those with responsibilities in responding to and managing allegations.  |
| <a href="#">eLearning: Professional Challenge and Escalation</a>                           | This eLearning provides an introduction to the principles and process outlined in the Hampshire, Isle of Wight, Portsmouth and Southampton (HIPS) Joint Working Protocol for Professional Challenge and Resolution of Professional Disagreement. The course should be undertaken by all staff in statutory, community and voluntary agencies who work with children and their families in the Hampshire Local Safeguarding Children Partnership (LSCP) area. |
| <a href="#">eLearning: Record Keeping</a>  | This is a generic eLearning course on record keeping and inter-agency information sharing for people who have contact with children in either a work or voluntary capacity. The eLearning should be undertaken by anyone who has to complete records in relation to their contact with children and families.  |
| <a href="#">eLearning: Advanced – Child Death Overview Panel and Child Death Reporting</a> | This eLearning provides an overview of the Child Death Overview Panel and child death reporting. It should be undertaken by managers who are involved in the child death process.  |



Hampshire  
Safeguarding  
Children  
Partnership

# ADOPTING A FAMILY APPROACH

---

An Introduction to Adopting a Family Approach

An Introduction to Emotionally Unstable Personality Disorder

An Introduction to Identifying and Supporting Young Carers

Housing and Homelessness Prevention

Families Who Move Across County Borders

Supporting Children of Substance Misusing Parents

An Introduction to Supporting Families in the Armed Forces

Suicide Prevention Awareness Training

eLearning: An Introduction to Private Fostering

eLearning: HIPS and 4LSAB Family Approach Toolkit

eLearning: Strengthening Parental Relationships Toolkit

eLearning: Talk Parental Relationships (Strengthening Parental Relationships)



# ADOPTING A FAMILY APPROACH

## AN INTRODUCTION TO ADOPTING A FAMILY APPROACH



Hampshire  
**Safe**guarding  
**Children**  
Partnership



**Delivered by:** HSCP Partnership Manager & HSAB Business Manager

**Delivery method:** Virtual

**Duration:** 1.5 hours

### LEARNING OUTCOMES

- Identify how a range of risk factors and vulnerabilities co-exist within families
- Understand the cumulative impact of these on children and adults at risk
- Understand the impact of risk and vulnerability on an adult's capacity to parent, care for others and themselves
- Understand the relevant legislative and statutory frameworks for adults and children
- Explore themes including Protective Factors, Restorative Practice, Strength Based Approach, Person Centered Working, Mental Capacity, Professional Curiosity and Transition
- Explore learning arising from Local Safeguarding Child Practice Reviews and Safeguarding Adult Reviews
- Understand the application of the Family Approach Protocol
- Explore the resources available under the toolkit
- Understand the importance of sharing of information in the context of the family

PLEASE CLICK ON THE LINKS BELOW TO BOOK YOUR PLACE NOW

**BOOK ON:**

[WEDNESDAY 5 FEBRUARY 2025 19:00 – 20:30](#)

# ADOPTING A FAMILY APPROACH

## AN INTRODUCTION TO EMOTIONALLY UNSTABLE PERSONALITY DISORDER

LUNCHTIME LEARNING



Hampshire  
**Safe**guarding  
**Children**  
Partnership

**Delivered by:** Southern Health Foundation Trust  
Professionals  
**Delivery method:** Virtual  
**Duration:** 1 hour

### LEARNING OUTCOMES

- Understand what Emotionally Unstable Personality Disorder is and how it can present
- Be aware of some of the symptoms of Emotionally Unstable Personality Disorder
- Share experiences and gain from others who have worked with parents who have Emotionally Unstable Personality Disorder
- Consider what can help assist professionals in supporting parents with Emotionally Unstable Personality Disorder

PLEASE CLICK ON THE LINKS BELOW TO BOOK YOUR PLACE NOW

**BOOK ON:**

[WEDNESDAY 26 FEBRUARY 2025 12:00 – 13:00](#)

# ADOPTING A FAMILY APPROACH

## AN INTRODUCTION TO IDENTIFYING AND SUPPORTING YOUNG CARERS



Hampshire  
**Safe**guarding  
**Children**  
Partnership

New For  
2024/25

**Delivered by:** Hampshire County Council Children's Services Department

**Delivery method:** Virtual

**Duration:** 1.5 hour

### LEARNING OUTCOMES

- Understand who young carers are, who they may care for, and the type of roles and responsibilities young carers have.
- Feel confident in how you can identify a young carer.
- Understand the issues young carers face and the impact upon their own wellbeing.
- Consider the rights of young carers and the legislative framework and the responsibilities across statutory and voluntary services and who else to involve when you identify a young carer.
- Know of the Hampshire Young Carers Alliance and the support offered to young carers across the county.

PLEASE CLICK ON THE LINKS BELOW TO BOOK YOUR PLACE NOW

**BOOK ON:**

[WEDNESDAY 13 NOVEMBER 2024 18.30 – 20.00](#)

[WEDNESDAY 5 MARCH 2025 12.00 – 13.00](#)

# ADOPTING A FAMILY APPROACH

## HOUSING AND HOMELESSNESS PREVENTION



Hampshire  
**Safe**guarding  
**Children**  
Partnership

LUNCHTIME LEARNING

**Delivered by:** Test Valley Borough Council

**Delivery method:** Virtual

**Duration:** 1 hour

### LEARNING OUTCOMES

- Provide an awareness of the legal duties to provide accommodation for people
- Explain how accommodation is allocated
- Understand the requirements to support people at risk of becoming homeless and support for those who are
- Understand how to support families where housing is a factor

PLEASE CLICK ON THE LINKS BELOW TO BOOK YOUR PLACE NOW

**BOOK ON:**

[WEDNESDAY 15 JANUARY 2025 12.00 – 13.00](#)

# ADOPTING A FAMILY APPROACH

## FAMILIES WHO MOVE ACROSS BORDERS



Hampshire  
**Safeguarding**  
**Children**  
Partnership

LUNCHTIME LEARNING

**Delivered by:** HSCP Partnership Manager

**Delivery method:** Virtual

**Duration:** 1 hour

### LEARNING OUTCOMES

- Gain an understanding of why it is important to know about families who move across county borders where there may be a safeguarding concern
- Understand the processes/roles and responsibilities of other agencies when families move across county borders
- Be aware of the importance of including information passed from another area in any referrals made

PLEASE CLICK ON THE LINKS BELOW TO BOOK YOUR PLACE NOW

**BOOK ON:**

[WEDNESDAY 11 DECEMBER 2024 19:00- 20:00](#)

# ADOPTING A FAMILY APPROACH

## SUPPORTING CHILDREN OF SUBSTANCE MISUSING PARENTS



Hampshire  
**Saf**eguarding  
**Children**  
Partnership

**catch**  
**22**

**Delivered by:** Inclusion 22 Presenters

**Delivery method:** Virtual

**Duration:** 1.5 hours

### LEARNING OUTCOMES

- Explore the substance misuse support available in Hampshire
- Understand what parental substance misuse is, and its difference to substance use
- Explore indicators of possible substance misuse in the home
- Gain an understanding of 'Hidden Harm' and how it affects children of different ages
- Learn how to speak to a child concerned about their parent/carer's substance misuse

PLEASE CLICK ON THE LINKS BELOW TO BOOK YOUR PLACE NOW

**BOOK ON:**

[WEDNESDAY 29 JANUARY 2025 09:30 – 11:00](#)



# ADOPTING A FAMILY APPROACH

## AN INTRODUCTION TO SUPPORTING FAMILIES IN THE ARMED FORCES



Hampshire  
**Safe**guarding  
**Children**  
Partnership

New For  
2024/25

**Delivered by:** Southern Health NHS  
Foundation Trust Professionals  
**Delivery method:** Virtual  
**Duration:** 1. hour

### LEARNING OUTCOMES

- Understanding the armed forces community and knowing what this status means
- Gain awareness of the population and local data.
- Understand challenges children and families in the armed forces encounter.
- Explore the support that is available for the armed forces community.

PLEASE CLICK ON THE LINKS BELOW TO BOOK YOUR PLACE NOW

**BOOK ON:**

[WEDNESDAY 22 JANUARY 2025 12:00 – 13:00](#)



# ADOPTING A FAMILY APPROACH

## SUICIDE PREVENTION AWARENESS TRAINING



Hampshire  
**Safe**guarding  
**Children**  
Partnership

**Delivered by:** Public Health

**Delivery method:** Virtual

**Duration:** 1.5 hours

### LEARNING OUTCOMES

- Increase awareness of the range of mental wellbeing and crisis intervention support available for children, young people, families and staff.
- Gain greater confidence in recognising when someone may be experiencing suicidality
- Increase awareness of the vulnerabilities and protective factors
- Understand how best to respond when someone may be experiencing suicidality
- Experience an opportunity to reflect on current practice
- Support for those who have been bereaved by suicide

PLEASE CLICK ON THE LINKS BELOW TO BOOK YOUR PLACE NOW

**BOOK ON:**

[WEDNESDAY 08 JANUARY 2025 13.30 – 15.00](#)

# ADOPTING A FAMILY APPROACH



Hampshire  
**Safe**guarding  
**Children**  
Partnership

## E-LEARNING COURSES



| Course  | Course Description   |
|---|--|
| <a href="#">eLearning: An Introduction to Private Fostering</a>                               | This course has been developed to support professionals in their understanding of private fostering and define professionals' and the public's responsibility towards children who are privately fostered. |
| <a href="#">eLearning: HIPS and 4LSAB Family Approach Toolkit</a>                             | This eLearning provides an overview of the HIPS and 4LSAB Family Approach Toolkit. It could be undertaken by any professional working with children and families in Hampshire.                             |
| <a href="#">eLearning: Strengthening Parental Relationships Toolkit</a>                       | This eLearning provides an overview of the HSCP Strengthening Parental Relationships Toolkit. It can be undertaken by any professional working with families in Hampshire.                                 |
| <a href="#">eLearning: Talk Parental Relationships (Strengthening Parental Relationships)</a> | This course has been developed to support professionals in talking to parents/ carers about their relationships.   |



Hampshire  
**Safe**guarding  
**Children**  
Partnership

# CHILD-ON-CHILD ABUSE

---

# CHILD-ON-CHILD ABUSE

## CHILD ON CHILD ABUSE



Hampshire  
**Safeguarding**  
**Children**  
Partnership

**Delivered by:** Forensic CAMHS

**Delivery method:** Virtual

**Duration:** 1.5 hours

### LEARNING OUTCOMES

- **Reflect on the types of Child-on-Child violence you have witnessed and consider definitions, context and prevalence**
- **Learn how to recognise Child-on-Child violence**
- **Discuss what to consider when responding to Child-on-Child violence from an individual and systemic perspective**
- **Embed learning through case examples**

PLEASE CLICK ON THE LINKS BELOW TO BOOK YOUR PLACE NOW

**BOOK ON:**

[WEDNESDAY 22 JANUARY 2025 09:30 – 11:00](#)

# CHILD ON CHILD ABUSE

## E-LEARNING COURSES



Hampshire  
**Safe**guarding  
**Children**  
Partnership



| Course   | Course Description   |
|--|--|
| <a href="#">Child on Child Abuse Toolkit eLearning</a> | This eLearning provides an overview of the Child-on-Child Abuse Toolkit. It can be undertaken by any professional working with families in the Hampshire local authority area. |



Hampshire  
**Safeguarding**  
**Children**  
Partnership

# CHILD SEXUAL ABUSE

---

An Introduction to Child Sexual Abuse

An Introduction to Harmful Sexual Behaviour

Medical Assessments in Suspected Child Sexual Abuse

Child Sexual Abuse Strategy (One Year On) – A Hampshire Approach

Spotting the Signs and Indicators of Child Sexual Abuse

Speaking to Children About Child Sexual Abuse

eLearning: An Introduction to the HIPS Sexual Abuse Strategy and Toolkit

eLearning: Brook Traffic Light Tool

# CHILD SEXUAL ABUSE

## AN INTRODUCTION TO CHILD SEXUAL ABUSE



Hampshire  
**Safe**guarding  
**Children**  
Partnership

**Delivered by:** Consultant Community Paediatrician (HHFT), Hampshire & IOW Constabulary & Hampshire Children's Services

**Delivery method:** Virtual

**Duration:** 1.5 hours

### LEARNING OUTCOMES

- Increase awareness of signs and symptoms of sexual abuse
- Understand how to report
- Understand the role of the Police and Children's Services
- Explore the role of the MASH
- Develop a clear awareness of the processes of Child Protection medicals and forensic medicals

PLEASE CLICK ON THE LINKS BELOW TO BOOK YOUR PLACE NOW

**BOOK ON:**

[WEDNESDAY 05 FEBRUARY 2025 09:30 – 11:00](#)



# CHILD SEXUAL ABUSE

## AN INTRODUCTION TO HARMFUL SEXUAL BEHAVIOUR



Hampshire  
**Safe**guarding  
**Children**  
Partnership

**Delivered by:** Youth Crime Prevention (YCP) Team Leader (YOT) & Forensic CAMHS  
**Delivery method:** Virtual  
**Duration:** 1.5 hours

### LEARNING OUTCOMES

- Develop greater awareness of the context of HSB
- Distinguish between typical sexual development and problematic, abusive, or violent HSB
- Identify some helpful strategies when risk assessing HSB
- Increase understanding of safety planning around HSB
- Identify further support that can offer reflection opportunities and guidance on HSB

PLEASE CLICK ON THE LINKS BELOW TO BOOK YOUR PLACE NOW

**BOOK ON:**

[WEDNESDAY 13 NOVEMBER 2024 09:30 – 11:00](#)

# CHILD SEXUAL ABUSE

## MEDICAL ASSESSMENTS IN SUSPECTED CHILD SEXUAL ABUSE



**Delivered by:** Designated Doctor, Hampshire and Isle of Wight ICB  
**Delivery method:** Virtual  
**Duration:** 2.5 hours

### LEARNING OUTCOMES

- Understand why medical examinations are important in suspected child sexual abuse.
- Know that if police or social workers don't refer for a CSA medical assessment, no one else will, potentially leaving health and safeguarding needs unmet.
- Know when and how to refer children for examination.
- Be aware of the timescales for examinations and why prompt referrals are needed.
- Have the confidence to explain to parents and children that the medical examination aims to be healing and therapeutic. It is non-invasive and child friendly.

PLEASE CLICK ON THE LINKS BELOW TO BOOK YOUR PLACE NOW

**BOOK ON:**

[WEDNESDAY 08 JANUARY 2025 09:30– 12:00](#)

# CHILD SEXUAL ABUSE

## CHILD SEXUAL ABUSE STRATEGY (ONE YEAR ON) – A HAMPSHIRE APPROACH



Hampshire  
**Safeguarding**  
**Children**  
Partnership

New For  
2024/25

**Delivered by:** Hampshire Safeguarding Children Partnership  
**Delivery method:** Virtual  
**Duration:** 1 hour

### LEARNING OUTCOMES

- Hear the findings from the Hampshire Safeguarding Children Partnership Intrafamilial Child Sexual Abuse Audit
- Understand the national learning in relation to child sexual abuse.
- Explore the Child Sexual Abuse Toolkit and key resources.
- Identify how you can implement the learning into your practice.

PLEASE CLICK ON THE LINKS BELOW TO BOOK YOUR PLACE NOW

### BOOK ON:

[WEDNESDAY 06 NOVEMBER 2024 13:30– 14:30](#)

[WEDNESDAY 15 JANUARY 2025 19.00 – 20.00](#)

# CHILD SEXUAL ABUSE

## SPOTTING THE SIGNS AND INDICATORS OF CHILD SEXUAL ABUSE



Hampshire  
**Safe**guarding  
**Children**  
Partnership

New For  
2024/25

**Delivered by:** Centre for Expertise on Child Sexual Abuse  
**Delivery method:** Virtual  
**Duration:** 1 hour

### LEARNING OUTCOMES

- An understanding of the Signs and Indicators Template and how to use it in practice
- The ability to build a picture of concerns when you are worried a child is being, or has been, sexually abused
- Greater knowledge of the emotional, behavioural and physical signs of sexual abuse and sexually abusive behaviour, and the factors that increase children's vulnerability to this form of harm
- Greater confidence in identifying, discussing, exploring and communicating concerns that a child is being sexually abused

PLEASE CLICK ON THE LINKS BELOW TO BOOK YOUR PLACE NOW

### BOOK ON:

[WEDNESDAY 04 DECEMBER 2024 19:00– 20:00](#)

[WEDNESDAY 5 MARCH 2025 15.30 – 16.30](#)

# CHILD SEXUAL ABUSE

## SPEAKING TO CHILDREN ABOUT CHILD SEXUAL ABUSE



Hampshire  
**Safeguarding**  
**Children**  
Partnership

New For  
2024/25

**Delivered by:** Centre for Expertise on Child Sexual Abuse  
**Delivery method:** Virtual  
**Duration:** 1 hour

### LEARNING OUTCOMES

- A good understanding of how the Communicating with Children Guide can support you in your work
- Increased awareness and understanding of the barriers children face in telling
- A greater understanding of the professional behaviours that can give children the confidence to speak out
- Increased knowledge and confidence in how to respond when a child tells of their abuse

PLEASE CLICK ON THE LINKS BELOW TO BOOK YOUR PLACE NOW

**BOOK ON:**

[WEDNESDAY 22 JANUARY 2025 19:00– 20:00](#)

[WEDNESDAY 26 MARCH 2025 15.30 – 16.30](#)

# CHILD SEXUAL ABUSE

## E-LEARNING COURSES



Hampshire  
**Safe**guarding  
**Children**  
Partnership



| Course   | Course Description   |
|--|--|
| <a href="#">eLearning: An Introduction to the HIPS Sexual Abuse Strategy and Toolkit</a> | <p>This eLearning provides an overview of the HSCP Child Sexual Abuse Toolkit. It could be undertaken by any professional working with children and families in Hampshire.</p> <p>This course will support you to:</p> <ul style="list-style-type: none"><li>• Understand how the toolkit can support professional practice</li><li>• Know how to access training for professionals in your local area and access resources and support for children and their families</li><li>• Be able to access local and national learning to inform your practice.</li></ul> |
| <a href="#">eLearning: Brook Traffic Light Tool</a>                                      | <p>The Sexual Behaviours Traffic Light Tool supports professionals working with children and young people by helping them to identify, understand and respond appropriately to sexual behaviours.</p> <p>This course aims to develop your knowledge and skills to confidently and effectively apply The Sexual Behaviours Traffic Light Tool.</p>  |



Hampshire  
Safeguarding  
Children  
Partnership

## DOMESTIC ABUSE

The Impact of Domestic Abuse on Children and Young People

Recognising and Responding to Perpetrators of Domestic Abuse

An Introduction to Child and Adolescent to Parent Violence (CPV/ APV)

Post Separation Abuse – Using the Courts and Child Contact Arrangements

Recognising and Responding to Coercive Controlling Behaviour

An Introduction to Economic Abuse

An Introduction to Stalking and Cyber Stalking

Responding Well to Disclosures of Domestic Abuse

An Introduction to Risk Assessment and DASH Risk Indicator Checklist

An Introduction to the Homicide Timeline

Recognising and Responding to People of Diverse Ethnic and Cultural Backgrounds who are

Victims/ Survivors of Domestic Abuse

Recognising and Responding to Domestic Abuse in LGBTQ+ Relationships

Recognising and Responding to Disability and Life Limiting Illness and Domestic Abuse

Recognising and Responding to Male Victim-Survivors of Domestic Abuse

eLearning: An Introduction to Differentiating Between Parental Conflict and Domestic

Abuse

eLearning: Domestic Abuse Toolkit



# DOMESTIC ABUSE

AN INTRODUCTION TO THE IMPACT OF DOMESTIC  
ABUSE ON CHILDREN AND YOUNG PEOPLE



Hampshire  
**Safe**guarding  
**Children**  
Partnership

**STOP**  
**DOMESTIC**  
**ABUSE**

Delivered by: STOP DOMESTIC ABUSE

Delivery method: Virtual

Duration: 1.5 hours

## LEARNING OUTCOMES

- Understand of the impact of domestic abuse on children, including physical and emotional impacts, and recognising DA as an ACE (Adverse Childhood Experience)
- Know how to respond to disclosures or suspicions that a child has witnessed or experienced domestic abuse
- Gain an awareness of specialist support available to children witnessing DA and how to refer to appropriate services, including safeguarding responsibilities

PLEASE CLICK ON THE LINKS BELOW TO BOOK YOUR PLACE NOW

**BOOK ON:**

[WEDNESDAY 27 NOVEMBER 2024 13:30 – 15:00](#)

[WEDNESDAY 19 MARCH 2025 09:30 – 11:00](#)

# DOMESTIC ABUSE

AN INTRODUCTION TO RECOGNISING AND  
RESPONDING TO PERPETRATORS OF DOMESTIC  
ABUSE



Hampshire  
**Safe**guarding  
**Children**  
Partnership



**Hampton**  
Trust

**Delivered by:** The Hampton Trust

**Delivery method:** Virtual

**Duration:** 1.5 hours

## LEARNING OUTCOMES

- Know how to identify perpetrators and respond to disclosures or suspicions of abusive behaviour
- Understand motivational interviewing, trauma informed practice and rolling with resistance
- Build an awareness of specialist support available to perpetrators of domestic abuse and referral pathways

PLEASE CLICK ON THE LINKS BELOW TO BOOK YOUR PLACE NOW

**BOOK ON:**

[WEDNESDAY 27 NOVEMBER 2024 19:00 – 20:30](#)

[WEDNESDAY 26 MARCH 2025 13:30 – 15:00](#)

# DOMESTIC ABUSE

## AN INTRODUCTION TO CHILD AND ADOLESCENT TO PARENT VIOLENCE (CPV/APV)



**STOP  
DOMESTIC  
ABUSE**

**Delivered by:** STOP DOMESTIC ABUSE

**Delivery method:** Virtual

**Duration:** 1.5 hours

### LEARNING OUTCOMES

- Understand what constitutes child to parent violence/adolescent to parent abuse and how they link to domestic abuse
- Understand how to respond and support the parent and child who are living with CPV/APV and abuse, including acknowledgement of the difficulties parents face in reporting CPV/APV
- Develop an awareness of the impact of APV on the parent and child
- Recognise the links between ACEs and CPV/APV
- Be aware of sources of support and how to signpost to support

PLEASE CLICK ON THE LINKS BELOW TO BOOK YOUR PLACE NOW

**BOOK ON:**

[WEDNESDAY 11 DECEMBER 2024 09:30 – 11:00](#)

# DOMESTIC ABUSE

## POST SEPARATION ABUSE – USING THE COURTS AND CHILD CONTACT ARRANGEMENTS



**STOP  
DOMESTIC  
ABUSE**

**Delivered by:** STOP DOMESTIC ABUSE

**Delivery method:** Virtual

**Duration:** 1.5 hours

### LEARNING OUTCOMES

- Gain an understanding of forms of domestic abuse which may continue after a relationship has ended, including coercive control
- Understand the longer-term nature of coercive control within domestic abuse cases
- Gain an understanding of risk factors following separation and safety planning options for child contact
- Develop knowledge around child arrangement orders and continuing abuse
- Identify sources of support and how to signpost to support

PLEASE CLICK ON THE LINKS BELOW TO BOOK YOUR PLACE NOW

**BOOK ON:**

[WEDNESDAY 20 NOVEMBER 2024 19:00 – 20:30](#)

# DOMESTIC ABUSE

## RECOGNISING AND RESPONDING TO COERCIVE CONTROLLING BEHAVIOUR



Hampshire  
**Safe**guarding  
**Children**  
Partnership

**IKWRO**  
WOMEN'S RIGHTS ORGANISATION

Delivered by: IKWRO

Delivery method: Virtual

Duration: 1.5 hours

### LEARNING OUTCOMES

- Gain a comprehensive understanding of the key terms, concepts, and legislation related to coercive controlling behaviour, including the provisions of the Domestic Abuse Act 2021.
- Recognise and describe the behaviours that constitute coercive control, including how these behaviours manifest in both intimate and family relationships.
- Understand the connection between coercive control and risk, particularly in the context of post-separation abuse, and how to assess and respond to these risks effectively.
- Develop the skills to offer initial support to victims of coercive control and confidently refer them to appropriate local domestic abuse services using established referral pathways.

PLEASE CLICK ON THE LINKS BELOW TO BOOK YOUR PLACE NOW

### BOOK ON:

[WEDNESDAY 04 DECEMBER 2024 09:30 – 11:00](#)

[WEDNESDAY 26 FEBRUARY 2025 13:30 – 15:00](#)

# DOMESTIC ABUSE

## ECONOMIC ABUSE

LUNCHTIME LEARNING



Hampshire  
**Safe**guarding  
**Children**  
Partnership

**STOP**  
**DOMESTIC**  
**ABUSE**

Delivered by: STOP DOMESTIC ABUSE

Delivery method: Virtual

Duration: 1 hour

### LEARNING OUTCOMES

- Understand economic abuse within the wider context of domestic abuse
- Develop an awareness of the extent and complexity of economic abuse
- Acknowledge the limitations for the victim on their ability to escape and understand the impact of those limitations
- Know where to go for support

PLEASE CLICK ON THE LINKS BELOW TO BOOK YOUR PLACE NOW

**BOOK ON:**

[WEDNESDAY 27 NOVEMBER 2024 12:00 – 13:00](#)

[WEDNESDAY 12 MARCH 2025 12.00 – 13.00](#)

# DOMESTIC ABUSE

## AN INTRODUCTION TO STALKING AND CYBER STALKING



Hampshire  
**Safe**guarding  
**Children**  
Partnership

**STOP**  
**DOMESTIC**  
**ABUSE**

Delivered by: STOP DOMESTIC ABUSE

Delivery method: Virtual

Duration: 1.5 hours

### LEARNING OUTCOMES

- Understand stalking behaviours and cyber stalking.
- Analyse the main ways someone can use technology to stalk their victim.
- Safety planning for victims of cyber stalking.

PLEASE CLICK ON THE LINKS BELOW TO BOOK YOUR PLACE NOW

**BOOK ON:**

[WEDNESDAY 11 DECEMBER 2024 13:30 – 15:00](#)



# DOMESTIC ABUSE

## RESPONDING WELL TO DISCLOSURES OF DOMESTIC ABUSE

LUNCHTIME LEARNING



**STOP  
DOMESTIC  
ABUSE**

**Delivered by:** STOP DOMESTIC ABUSE

**Delivery method:** Virtual

**Duration:** 1 hour

### LEARNING OUTCOMES

- To develop an understanding of what constitutes domestic abuse
- To have an understanding of best practice when responding to disclosures of domestic abuse
- To know what support is available to victims and perpetrators of domestic abuse and how to signpost or refer

PLEASE CLICK ON THE LINKS BELOW TO BOOK YOUR PLACE NOW

**BOOK ON:**

[WEDNESDAY 11 DECEMBER 2024 12:00 – 13:00](#)

[WEDNESDAY 19 MARCH 2025 19:00 – 20:00](#)

# DOMESTIC ABUSE

## AN INTRODUCTION TO RISK ASSESSMENT AND THE DASH RISK INDICATOR CHECKLIST



Hampshire  
**Safe**guarding  
**Children**  
Partnership

**STOP**  
**DOMESTIC**  
**ABUSE**

Delivered by: STOP DOMESTIC ABUSE

Delivery method: Virtual

Duration: 1.5 hour

### LEARNING OUTCOMES

- Understand how the DASH model was developed and why
- Understand how the DASH RIC is used and about good practice when risk assessing victims of domestic abuse
- Gain an understanding of the high-risk factors and using professional judgement

PLEASE CLICK ON THE LINKS BELOW TO BOOK YOUR PLACE NOW

**BOOK ON:**

[27 NOVEMBER 2024 09.30 – 11.00](#)

# DOMESTIC ABUSE

## AN INTRODUCTION TO THE HOMICIDE TIMELINE



Hampshire  
**Safe**guarding  
**Children**  
Partnership



**Hampton**  
Trust

**Delivered by:** Hampton Trust

**Delivery method:** Virtual

**Duration:** 1.5 hours

### LEARNING OUTCOMES

- Understand what the homicide timeline is and how it was developed.
- Explore the links between coercive control, stalking and homicide.
- Learn about the different stages of the homicide timeline and how to apply the model in practice.

PLEASE CLICK ON THE LINKS BELOW TO BOOK YOUR PLACE NOW

### BOOK ON:

Dates have been completed for the 2024/25 training year.  
New dates will be included within the calendar for the 2025/26  
training year... further information to be shared soon.

# DOMESTIC ABUSE

RECOGNISING AND RESPONDING TO PEOPLE OF  
DIVERSE ETHNIC AND CULTURAL BACKGROUNDS WHO  
ARE VICTIMS/SURVIVORS OF DOMESTIC ABUSE



Hampshire  
Safe guarding  
Children  
Partnership

**IKWRO**  
WOMEN'S RIGHTS ORGANISATION

Delivered by: IKWRO  
Delivery method: Virtual  
Duration: 1.5 hours

New For  
2024/25

## LEARNING OUTCOMES

- **Recognise Diverse Forms of Domestic Abuse:** Understand and identify the various forms of domestic abuse, with a focus on those that disproportionately affect individuals from minoritised ethnic and cultural backgrounds.
- **Apply Cultural Competency:** Implement culturally sensitive and unbiased approaches when engaging with survivors, ensuring respectful and effective communication that considers the survivor's background and experiences.
- **Identify and Address Harmful Practices:** Recognise signs of harmful cultural practices and understand their impact on victims, enabling appropriate and informed responses. Harmful practises including forced marriage, child marriage, FGM, breast ironing, corrective rape, acid attacks, widow rituals will be included in the training.
- **Utilise Intersectional Approaches:** Strengthen their practice by applying intersectional approaches that address the unique challenges faced by Black and minoritised communities, ensuring interventions are safe, effective, and culturally appropriate.
- **Know how to signpost and refer to other (specialist) organisations and agencies using the local referral pathway.**

PLEASE CLICK ON THE LINKS BELOW TO BOOK YOUR PLACE NOW

**BOOK ON:**

[12 FEBRUARY 2025 13.30 – 15.00](#)

# DOMESTIC ABUSE

## RECOGNISING AND RESPONDING TO DOMESTIC ABUSE IN LGBTQ+ RELATIONSHIPS



Hampshire  
**Safe**guarding  
**Children**  
Partnership

**STOP**  
**DOMESTIC**  
**ABUSE**

Delivered by: STOP DOMESTIC ABUSE

Delivery method: Virtual

Duration: 1.5 hours

New For  
2024/25

### LEARNING OUTCOMES

- Understand the dynamics of an abusive relationship as it relates to LGBTQ+ couples and identify LGBTQ+ specific tactics of power and control.
- Navigate language and definitions relating to LGBTQ+ identities and understand the historical and national legislation that has and continues to influence LGBTQ+ people's lives.
- Understand the key issues in LGBTQ+ relationships, recognise the barriers and challenges that the LGBTQ+ people experience within society.
- Improve confidence for professionals in responding to and discussing domestic abuse within LGBTQ+ relationships.
- To recognise and reframe how your work might intersect with LGBTQ+ survivor experiences.
- Develop the skills to offer initial support to victims/ survivors and confidently refer them to appropriate local domestic abuse services using established referral pathways.

PLEASE CLICK ON THE LINKS BELOW TO BOOK YOUR PLACE NOW

**BOOK ON:**

[13 NOVEMBER 2024 13.30 – 15.00](#)

[26 FEBRUARY 2025 09.30 – 11.00](#)

# DOMESTIC ABUSE

## RECOGNISING AND RESPONDING TO DISABILITY AND LIFE LIMITING ILLNESS AND DOMESTIC ABUSE (DLLA)



Hampshire  
**Safe**guarding  
**Children**  
Partnership



Preventing and  
Responding to  
Domestic and  
Sexual Abuse



Delivered by: **YELLOW DOOR**  
Delivery method: Virtual  
Duration: 1.5 hours

New For  
2024/25

### LEARNING OUTCOMES

- Have a greater understanding about the dynamics of disability and abuse.
- Have a good working knowledge of an individual's rights and entitlements.
- An understanding of the risk factors and vulnerabilities faced by disabled adults.
- Identify what barriers and challenges disabled people face when reporting/disclosing domestic abuse.
- Promoting empowerment, independence and advocacy within our roles.
- Locate support that is available for persons being subjected to domestic abuse.
- Develop the skills to offer initial support to victims/ survivors and confidently refer them to appropriate local domestic abuse services using established referral pathways.

PLEASE CLICK ON THE LINKS BELOW TO BOOK YOUR PLACE NOW

### BOOK ON:

[4 DECEMBER 2024 12.00 – 13.30](#)

[5 MARCH 2025 09.30 – 11.00](#)

# DOMESTIC ABUSE

## RECOGNISING AND RESPONDING TO MALE VICTIM-SURVIVORS OF DOMESTIC ABUSE



Hampshire  
**Safe**guarding  
**Children**  
Partnership

**STOP**  
**DOMESTIC**  
**ABUSE**

Delivered by: STOP DOMESTIC ABUSE

Delivery method: Virtual

Duration: 1.5 hours

New For  
2024/25

### LEARNING OUTCOMES

- Develop an understanding of key terms/concepts and legislation around Domestic Abuse.
- Understand the domestic abuse experiences of men and unique barriers to accessing support.
- Gain skills in responding appropriately to male victim-survivors.
- Identify additional challenges and help-seeking barriers for LGBTQ+ men or men from specific ethnic and cultural backgrounds.
- Identify dynamics, risk factors, protective factors and warning signs.
- Develop the skills to offer initial support to victims/ survivors and confidently refer them to appropriate local domestic abuse services using established referral pathways.

PLEASE CLICK ON THE LINKS BELOW TO BOOK YOUR PLACE NOW

### BOOK ON:

[4 DECEMBER 2024 13.30 – 15.00](#)

[26 MARCH 2025 12.00 – 13.30](#)



# DOMESTIC ABUSE

## E-LEARNING COURSES



Hampshire  
**Safe**guarding  
**Children**  
Partnership



| Course  | Course Description  |
|---|---|
| <a href="#"><u>eLearning: An Introduction to Differentiating Between Parental Conflict and Domestic Abuse</u></a> | This course has been developed to support professionals in their understanding of the difference between parental conflict and domestic abuse.  |
| <a href="#"><u>eLearning: Domestic Abuse Toolkit</u></a>  | This eLearning provides an overview of the Domestic Abuse Toolkit. It can be undertaken by any professional working with families in Hampshire. |



Hampshire  
**Safe**guarding  
**Children**  
Partnership

# HARMFUL PRACTICES

---

An Introduction to 'Honour' Based Abuse, Forced Marriage and Dowry  
An Introduction to Female Genital Mutilation  
An Introduction to Child Abuse Linked to Faith and Belief  
An Introduction to Breast Ironing

# HARMFUL PRACTICES

## AN INTRODUCTION TO 'HONOUR' BASED ABUSE, FORCED MARRIAGE AND DOWRY ABUSE



Hampshire  
Safeguarding  
Children  
Partnership



PSCP  
Portsmouth Safeguarding  
Children Partnership  
Protecting Portsmouth's Children



SSCP  
Southampton Safeguarding  
Children Partnership

**Delivered by:** Yellow Door & Stop Domestic Abuse Professionals  
**Delivery method:** Virtual  
**Duration:** 1.5 hours

### LEARNING OUTCOMES

- Develop an understanding of 'Honour' Based Abuse (HBA), Forced Marriage (FM) and Dowry Abuse
- Learn how to recognise signs of HBA and FM
- Learn about laws that are in place to protect people and agency reporting duties
- Recognise the importance of the "One Chance Rule"
- Know where to get help

PLEASE CLICK ON THE LINKS BELOW TO BOOK YOUR PLACE NOW

**BOOK ON:**

[WEDNESDAY 19 MARCH 2025 13:30 – 15:00](#)

# HARMFUL PRACTICES

## AN INTRODUCTION TO FEMALE GENITAL MUTILATION



**Delivered by:** Senior Designated Nurse,  
Yellow Door & Stop Domestic Abuse  
Professionals

**Delivery method:** Virtual

**Duration:** 1.5 hours

### LEARNING OUTCOMES

- Increase your knowledge and understanding of FGM, including the types of FGM and why/how it is performed
- Improve your understanding of the prevalence of FGM, including locally within Hampshire areas
- Gain an understanding of the legal frameworks surrounding FGM
- Gain an understanding into your roles and responsibilities in relation to FGM
- Identify who is 'at risk' of FGM
- Understand the key health risks and consequences of FGM
- Reinforce the local referral procedure within Hampshire, Isle of Wight, Portsmouth and Southampton

PLEASE CLICK ON THE LINKS BELOW TO BOOK YOUR PLACE NOW

**BOOK ON:**

[WEDNESDAY 12 MARCH 2025 09:30 – 11:00](#)

# HARMFUL PRACTICES

## AN INTRODUCTION TO CHILD ABUSE LINKED TO FAITH AND BELIEF (CALFB)



**Delivered by:** Hampshire & IOW Constabulary & Southampton Harmful Practices Lead (Children's Services)

**Delivery method:** Virtual

**Duration:** 1.5 hours

### LEARNING OUTCOMES

- Understand harmful practices linked to faith and belief
- Identify signs and indicators
- Identify your own responsibilities within your organisation
- Understand resources available
- Understand the role of the police and children's social care

PLEASE CLICK ON THE LINKS BELOW TO BOOK YOUR PLACE NOW

**BOOK ON:**

[WEDNESDAY 26 MARCH 2025 09:30 – 11:00](#)

# HARMFUL PRACTICES

## AN INTRODUCTION TO BREAST IRONING



Hampshire  
Safeguarding  
Children  
Partnership



PSCP  
Portsmouth Safeguarding  
Children Partnership  
Protecting Portsmouth's Children



**Delivered by:** Superintendent, Surrey Police  
**Delivery method:** Virtual  
**Duration:** 1.5 hours

### LEARNING OUTCOMES

- Understand what breast flattening/ironing is and the ways in which it is done
- Explore some of the indicators of breast flattening/ironing and its prevalence
- Consider the impact of breast flattening/ironing
- Know how to respond to cases of/suspected cases of breast flattening/ironing

PLEASE CLICK ON THE LINKS BELOW TO BOOK YOUR PLACE NOW

**BOOK ON:**

[WEDNESDAY 12 MARCH 2025 13:30 – 15:00](#)



Hampshire  
**Safe**guarding  
**Children**  
Partnership

# KEEPING CHILDREN SAFE ONLINE

---

An Introduction to Keeping Children Safe Online  
An Introduction to the Risks Associated with Gaming and Gambling



# KEEPING CHILDREN SAFE ONLINE

## AN INTRODUCTION TO KEEPING CHILDREN SAFE ONLINE



Hampshire  
**Safeguarding**  
**Children**  
Partnership

**Delivered by:** HIAS Professionals

**Delivery method:** Virtual

**Duration:** 1.5 hours

### LEARNING OUTCOMES

- **Develop or strengthen understanding of safeguarding in the context of children's lives and their use of social media**
- **Become more confident in identifying how our most vulnerable children can be supported with going online**
- **Explore a range of applications currently used by children**
- **Develop an enhanced awareness of how children can be exploited and/or abused online, including the tactics and technology used by perpetrators**
- **Develop your ability to support children in staying safe online, formulating prevention and intervention strategies with children and their families**
- **Explore the role of parents/carers in keeping children safe online, including the importance of consent when posting content and images (sharenting)**
- **Explore how professionals can raise awareness around online safety and support families with online risks and behaviours**

PLEASE CLICK ON THE LINKS BELOW TO BOOK YOUR PLACE NOW

**BOOK ON:**

[WEDNESDAY 12 FEBRUARY 2025 13:30 – 15:00](#)

# KEEPING CHILDREN SAFE ONLINE

AN INTRODUCTION TO THE RISKS  
ASSOCIATED WITH GAMING AND GAMBLING  
IN UNDER 18s



Hampshire  
**Safe**guarding  
**Children**  
Partnership

New For  
2024/25

Delivered by: HIAS Professionals  
Delivery method: Virtual  
Duration: 1 hour

## LEARNING OUTCOMES

- What is gambling?
- What influences young people to gamble?
- What are the chances of winning?
- How does gaming support gambling behaviours?
- What are the signs of addictive gambling and gaming?
- Where can you go for support?

PLEASE CLICK ON THE LINKS BELOW TO BOOK YOUR PLACE NOW

**BOOK ON:**

[WEDNESDAY 29 JANUARY 2025 19:00 – 20:00](#)



Hampshire  
**Safe**guarding  
**Children**  
Partnership

# LEARNING FROM REVIEWS

---

Learning From Reviews 24/25

An Introduction to Professional Curiosity and Disguised Compliance

An Introduction to Having Honest Conversations

An Introduction to Fabricated or Induced Illnesses

An Introduction to ARFID (Avoidant Restrictive Food Intake Disorder)

eLearning: An Introduction to Child Safeguarding Practice Reviews

eLearning: Learning From Reviews Toolkit

eLearning: Analysis of Risk

eLearning: An Introduction to Safeguarding Supervision

# LEARNING FROM REVIEWS

LEARNING FROM REVIEWS 24/25



Hampshire  
**Safe**guarding  
**Children**  
Partnership

**Delivered by:** HSCP Partnership Manager & Serious Case Reviewer, Hampshire Constabulary

**Delivery method:** Virtual

**Duration:** 1.5 hours

## LEARNING OUTCOMES

- To hear the findings and lessons from local reviews.
- To be aware of programmes of work to implement learning in Hampshire.
- To be informed of themes emerging from National Child Safeguarding Practice Reviews.
- To be able to apply this learning to your own practice.

PLEASE CLICK ON THE LINKS BELOW TO BOOK YOUR PLACE NOW

**BOOK ON:**

[WEDNESDAY 12 FEBRUARY 2025 19:00 – 20:30](#)

# LEARNING FROM REVIEWS

## UNPACKING DISGUISED COMPLIANCE – THE IMPORTANCE OF PROFESSIONAL CURIOSITY



Hampshire  
**Safeguarding**  
**Children**  
Partnership

New For  
2024/25

**Delivered by:** Area Director (SW) Children's Services  
Department & HSCP Partnership Manager  
**Delivery method:** Virtual  
**Duration:** 1.5 hours

### LEARNING OUTCOMES

- Understand the importance of professional curiosity when working with families.
- Recognising some of the barriers to curiosity.
- Understand what 'disguised compliance' is and when it might occur.
- Understand the challenges faced when working with families where 'disguised compliance' occurs.
- Gain an overview of what practitioners can do to engage with families and keep the focus on the needs of the child.

PLEASE CLICK ON THE LINKS BELOW TO BOOK YOUR PLACE NOW

**BOOK ON:**

[WEDNESDAY 23 OCTOBER 2024 19:00 – 20:30](#)

[WEDNESDAY 12 FEBRUARY 2025 09:30 – 11:00](#)

# LEARNING FROM REVIEWS

## AN INTRODUCTION TO HAVING HONEST CONVERSATIONS



Hampshire  
**Safeguarding**  
**Children**  
Partnership

**Delivered by:** Head of Hampshire Youth Justice Service

**Delivery method:** Virtual

**Duration:** 1.5 hours

### LEARNING OUTCOMES

- Learn about the existing barriers to having honest conversations
- Understand the possible consequences of not having honest conversations
- Understand how planning honest conversations in advance can support outcomes

PLEASE CLICK ON THE LINKS BELOW TO BOOK YOUR PLACE NOW

**BOOK ON:**

[WEDNESDAY 15 JANUARY 2025 13:30 – 15:00](#)

# LEARNING FROM REVIEWS

## AN INTRODUCTION TO FABRICATED OR INDUCED ILLNESS

LUNCHTIME LEARNING



Hampshire  
**Safe**guarding  
**Children**  
Partnership

**Delivered by:** Specialist Safeguarding Children Practitioner  
**Delivery method:** Virtual  
**Duration:** 1 hour

### LEARNING OUTCOMES

- Consider the spectrum of Fabricated or Induced Illnesses
- Explore some of the research, including facts and figures relating to Fabricated or Induced Illnesses
- Focus on key practice points for working with cases of Fabricated or Induced Illnesses, including feedback from children and young people
- Gain an understanding of the complexities of working with cases/suspected cases of Fabricated or Induced Illnesses

PLEASE CLICK ON THE LINKS BELOW TO BOOK YOUR PLACE NOW

**BOOK ON:**

[WEDNESDAY 29 JANUARY 2025 12:00 – 13:00](#)



# LEARNING FROM REVIEWS

## AVOIDANT RESTRICTIVE FOOD INTAKE DISORDER



LUNCHTIME LEARNING



Hampshire  
**Safeguarding**  
**Children**  
Partnership

**Delivered by:** CAMHS Professionals

**Delivery method:** Virtual

**Duration:** 1 hour

### LEARNING OUTCOMES

- Understand what ARFID is
- Explore practical approaches to supporting a young person with ARFID

PLEASE CLICK ON THE LINKS BELOW TO BOOK YOUR PLACE NOW

**BOOK ON:**

[WEDNESDAY 05 MARCH 2025 12:00 – 13:00](#)

# LEARNING FROM REVIEWS



Hampshire  
**Safeguarding**  
**Children**  
Partnership

## E-LEARNING COURSES



| Course  | Course Description   |
|---|--|
| <a href="#">eLearning: An Introduction to Child Safeguarding Practice Reviews</a> | <p>An Introduction to Child Safeguarding Practice Reviews eLearning course is for all professionals who may be involved in a Child Safeguarding Practice Review. This might include:</p> <ul style="list-style-type: none"><li>• practitioners involved with a family</li><li>• a professional who has been asked to produce a report/chronology on behalf of their organisation</li><li>• a professional who has been requested to be a panel member on a review group</li><li>• a professional required to sign off agency and Partnership reports on behalf of their organisation and Hampshire Safeguarding Children Partnership</li></ul> |
| <a href="#">eLearning: Learning From Reviews Toolkit</a>                          | <p>This eLearning provides an overview of the Learning From Reviews Toolkit. It can be undertaken by any professional working with families in Hampshire.</p>  |
| <a href="#">eLearning: Analysis of Risk</a>                                       | <p>This eLearning provides an overview of Analysis of Risk. It can be undertaken by any professional working with families in Hampshire.</p>   |
| <a href="#">eLearning: An Introduction to Safeguarding Supervision</a>            | <p>This eLearning provides practitioners, who are both frontline and managerial, with information, tools and techniques to ensure that safeguarding supervisory practice is reflective, constructive and holds service users at the centre of the discussions.</p>   |



Hampshire  
**Safeguarding**  
**Children**  
Partnership

# MISSING AND CHILD EXPLOITATION

---

Missing, Exploited and Trafficked Children (MET)

Children Who Go Missing from Home/Care

Child Exploitation - As a Health Professional, What Do You Need to  
Know?

An Introduction to the Child Exploitation Risk Assessment Framework  
(CERAF)

An Introduction To Trafficking and the National Referral Mechanism

eLearning: Child Exploitation Toolkit eLearning

# MISSING AND CHILD EXPLOITATION

## MISSING, EXPLOITED AND TRAFFICKED CHILDREN



**Delivered by:** The Willow Team  
**Delivery method:** Virtual  
**Duration:** 1.5 hours

### LEARNING OUTCOMES

- **Improve the awareness of child exploitation among front-line professionals and managers**
- **Enable front-line professionals to recognise the signs and indicators of child exploitation and to refer their concerns in line with agreed local processes**
- **Explain categories of risk including use of local assessment tools**
- **Explore pathways of support available to keep children safe in Hampshire**
- **Using scenario-based discussions, help staff acquire greater knowledge of how agencies can work together to protect children at risk of exploitation**

PLEASE CLICK ON THE LINKS BELOW TO BOOK YOUR PLACE NOW

**BOOK ON:**

[WEDNESDAY 08 JANUARY 2025 09:30- 11:00](#)

# MISSING AND CHILD EXPLOITATION

## AN INTRODUCTION TO CHILDREN WHO GO MISSING FROM HOME/CARE



LUNCHTIME LEARNING



**Delivered by:** The Willow Team & Missing, Exploited & Trafficked (MET) Hub Southampton City Council  
**Delivery method:** Virtual  
**Duration:** 1 hour

### LEARNING OUTCOMES

- Understand the definition of 'missing'
- Develop awareness of the process of reporting a child missing and responses
- Understand the purpose of Return Home Interviews/Missing Conversations and how these help inform planning
- Understand the role of push and pull factors
- Highlight some of the risks which can be associated with missing episodes
- Reflect on professional considerations for practice
- Provide details of local authority points of contact in relation to missing children

PLEASE CLICK ON THE LINKS BELOW TO BOOK YOUR PLACE NOW

**BOOK ON:**

[WEDNESDAY 19 MARCH 2025 12:00 – 13:00](#)

# MISSING AND CHILD EXPLOITATION

## CHILD EXPLOITATION: AS A HEALTH PROFESSIONAL WHAT DO YOU NEED TO KNOW? (HEALTH CERAF)



**Delivered by:** Primary Care Professionals with Safeguarding Responsibilities including Designated Doctors and Nurses  
**Delivery method:** Virtual  
**Duration:** 1.5 hours

### LEARNING OUTCOMES

- Develop awareness and understanding of the different types of child exploitation
- Develop skills in recognising the signs of exploitation in children
- Consider the appropriate response of health practitioners when risks and indicators of exploitation in children are identified, including how to utilise the skills and expertise of multi-agency partners
- Develop awareness of the risk assessment tools available to health practitioners to support the assessment and identification of risk

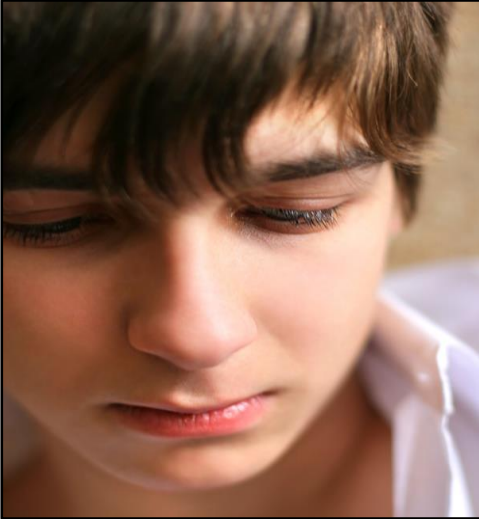
PLEASE CLICK ON THE LINKS BELOW TO BOOK YOUR PLACE NOW

**BOOK ON:**

[WEDNESDAY 13 NOVEMBER 2024 12:00 – 13:30](#)

# MISSING AND CHILD EXPLOITATION

## AN INTRODUCTION TO THE CHILD EXPLOITATION RISK ASSESSMENT FRAMEWORK (CERAF)



**Delivered by:** The Willow Team & Children and Families Practice Trainer at Portsmouth City Council  
**Delivery method:** Virtual  
**Duration:** 1.5 hours

### LEARNING OUTCOMES

- Explore the newly developed HIPS Child Exploitation Risk Assessment Framework (CERAF)
- Observe best practice guidance on completion of the CERAF
- Understand scoring and actions to take upon completion

PLEASE CLICK ON THE LINKS BELOW TO BOOK YOUR PLACE NOW

**BOOK ON:**

[WEDNESDAY 05 FEBRUARY 2025 13:30 – 15:00](#)



# MISSING AND CHILD EXPLOITATION

## AN INTRODUCTION TO TRAFFICKING AND THE NATIONAL REFERRAL MECHANISM



LUNCHTIME LEARNING

**Delivered by:** The Willow Team  
**Delivery method:** Virtual  
**Duration:** 1 hour

### LEARNING OUTCOMES

- Provide a brief overview of the Modern Slavery Act 2015
- Better understand the mechanisms of trafficking
- Explain the application of the 'National Referral Mechanism' (NRM) for children and young people
- Better understand your role and responsibilities
- Know where you can go for support and guidance

PLEASE CLICK ON THE LINKS BELOW TO BOOK YOUR PLACE NOW

**BOOK ON:**

[WEDNESDAY 26 MARCH 2025 12:00 – 13:00](#)

# MISSING AND CHILD EXPLOITATION



Hampshire  
**Safe**guarding  
**Children**  
Partnership

## E-LEARNING COURSES

---



| Course  | Course Description  |
|---|---|
| <a href="#">eLearning: Child Exploitation Toolkit</a> | This eLearning provides an overview of the Child Exploitation Toolkit. It can be undertaken by any professional working with families in Hampshire. |



# NEGLECT

---

Understanding, Identifying and Responding to Neglect

Understanding Cumulative Harm and Preventing the Normalisation of

Neglect

# NEGLECT

## UNDERSTANDING, IDENTIFYING AND RESPONDING TO NEGLECT



Hampshire  
**Safe**guarding  
**Children**  
Partnership

**Delivered by:** HSCP Partnership Manager

**Delivery method:** Virtual

**Duration:** 1.5 hours

### LEARNING OUTCOMES

- Understand the concept of significant harm and neglect as identified in the IOWSCP and the HSCP Neglect Strategy
- Identify indicators of neglect, including the four types of neglect outlined by Howe (2005), and consider the significance of individual perspectives when identifying neglect and the implications for practice
- Explore the IOWSCP and HSCP practitioner tools available via the online Neglect Toolkit and consider how they can be used to support single and multi-agency working

PLEASE CLICK ON THE LINKS BELOW TO BOOK YOUR PLACE NOW

**BOOK ON:**

[WEDNESDAY 05 MARCH 2025 19.00 – 20.30](#)

# NEGLECT

---

## UNDERSTANDING CUMULATIVE HARM AND PREVENTING THE NORMALISATION OF NEGLECT

---



Hampshire  
**Safe**guarding  
**Children**  
Partnership

New For  
2024/25

Delivered by: HSCP Partnership Manager

Delivery method: Virtual

Duration: 1.5 hours

---

### LEARNING OUTCOMES

- To understand the importance of looking beyond single incidents (cumulative harm)
- To gain awareness of the impact of cumulative harm.
- Recognise indicators of cumulative harm.
- Be aware of the findings from national reviews on normalizing neglect.

PLEASE CLICK ON THE LINKS BELOW TO BOOK YOUR PLACE NOW

### BOOK ON:

[WEDNESDAY 04 DECEMBER 2024 12:00– 13:30](#)

[WEDNESDAY 5 MARCH 2025 09.30 – 11.00](#)



Hampshire  
**Safe**guarding  
**Children**  
Partnership

**PREVENT**

---

Prevent

eLearning: Prevent Toolkit

# PREVENT

---

## PREVENT



Hampshire  
**Safe**guarding  
**Children**  
Partnership

**Delivered by:** HIAS Professionals

**Delivery method:** Virtual

**Duration:** 2 hours

### LEARNING OUTCOMES

- Understand what Prevent is and the current threat
- Gain knowledge on radicalization, extremism and terrorism and how it can take place
- Understand the push and pull factors and recognize behaviours associated with radicalization and extremism
- Know what to do in cases where you suspect someone may be being radicalised
- Look at individual cases of radicalisation and the outcomes

PLEASE CLICK ON THE LINKS BELOW TO BOOK YOUR PLACE NOW

**BOOK ON:**

[WEDNESDAY 26 FEBRUARY 2025 09:30 – 11:30](#)



# PREVENT

## E-LEARNING COURSES



Hampshire  
**Safe**guarding  
**Children**  
Partnership



| Course                                     | Course Description   |
|--|--|
| <a href="#">eLearning: Prevent Toolkit</a> | This eLearning provides an overview of the Prevent Toolkit. It can be undertaken by any professional working with families in Hampshire. |



Hampshire  
**Safe**guarding  
**Children**  
Partnership

# SAFEGUARDING ADOLESCENTS

---

# SAFEGUARDING ADOLESCENTS

## SAFEGUARDING ADOLESCENTS



Hampshire  
**Safe**guarding  
**Children**  
Partnership

**Delivered by:** HIAS Professionals and Hampshire & IOW ICB

**Delivery method:** Virtual

**Duration:** 2 hours

### LEARNING OUTCOMES

- Know how to effectively engage with and respond to adolescent safeguarding
- Be able to identify protective factors
- Recognise the strengths and vulnerabilities of adolescents
- Hear findings from local and national reviews
- Understand safeguarding themes that are specific to adolescents, including abuse and neglect
- Understand how to prevent abuse and neglect of adolescents

PLEASE CLICK ON THE LINKS BELOW TO BOOK YOUR PLACE NOW

### BOOK ON:

[WEDNESDAY 20 NOVEMBER 2024 13:30 – 15:30](#)

[WEDNESDAY 26 MARCH 2025 18:30 – 20:30](#)



Hampshire  
**Safe**guarding  
**Children**  
Partnership

# SAFEGUARDING AND CHILD DEVELOPMENT

---

Learning From Reviews – Safeguarding Children with Complex Health Needs  
Safeguarding Disabled Children (Including Children With a Learning Disability)  
An Introduction to the Impact of Developmental Trauma on Children and Young  
People

# SAFEGUARDING AND CHILD DEVELOPMENT

## SAFEGUARDING CHILDREN WITH COMPLEX HEALTH NEEDS

LUNCHTIME LEARNING



Hampshire  
Safeguarding  
Children  
Partnership



**Delivered by:** Designated Doctor for Safeguarding Children  
**Delivery method:** Virtual  
**Duration:** 1 hour

### LEARNING OUTCOMES

- Learn which children with disabilities are more vulnerable and/or more likely to be abused
- Recognise the voice of the child
- Identify the links between neglect and childhood disabilities
- Discover how to work with and challenge parents/carers of disabled children
- Understand the importance of a lead professional for these children

PLEASE CLICK ON THE LINKS BELOW TO BOOK YOUR PLACE NOW

**BOOK ON:**

[WEDNESDAY 20 NOVEMBER 2024 12:00 – 13:00](#)

# SAFEGUARDING AND CHILD DEVELOPMENT

## SAFEGUARDING DISABLED CHILDREN (INCLUDING CHILDREN WITH A LEARNING DISABILITY)



Hampshire  
**Safe**guarding  
**Children**  
Partnership

**Delivered by:** Consultant Community Paediatrician (HHFT) &  
Team Manager, Disabled Children's Team, HCC

**Delivery method:** Virtual

**Duration:** 1.5 hours

### LEARNING OUTCOMES

- Explore the current legislation, guidance and context relating to children with a disability including Hampshire's policies and procedures
- Understand the particular circumstances which make disabled children more vulnerable to abuse
- Understand/recognise the signs presented by disabled children who may have been subjected to abuse, including any potential for confusion in interpretation
- Understand the factors which may influence when disabled children need help and protection
- Ensure that interventions remain focused on the best interests of the child whilst working in complex situations

PLEASE CLICK ON THE LINKS BELOW TO BOOK YOUR PLACE NOW

**BOOK ON:**

[WEDNESDAY 23 OCTOBER 2024 09:30 – 11:00](#)

# SAFEGUARDING AND CHILD DEVELOPMENT

## AN INTRODUCTION TO THE IMPACT OF DEVELOPMENTAL TRAUMA ON CHILDREN AND YOUNG PEOPLE



Hampshire  
**Saf**e guarding  
**Ch**ildren  
Partnership

New For  
2024/25

**Delivered by:** Hampshire Educational Psychology Service  
**Delivery method:** Virtual  
**Duration:** 1.5 hour

### LEARNING OUTCOMES

- An understanding of the basic principles of developmental trauma.
- Recognise the range of ways that developmental trauma can impact on children and young people.
- Increased awareness of how developmental trauma can impact on attachment patterns.
- Explore the pathways of support that are available for children living in the Hampshire local authority area.

PLEASE CLICK ON THE LINKS BELOW TO BOOK YOUR PLACE NOW

**BOOK ON:**

[WEDNESDAY 08 JANUARY 2025 12:00 – 13:30](#)





Hampshire  
**Safe**guarding  
**Children**  
Partnership

# SAFEGUARDING UNDER ONES

---

An Introduction to Safeguarding Infants

An Introduction to Safe Sleep

An Introduction to Perinatal Mental Health and the Impact on the Child

An Introduction to the Importance of Engaging with Fathers and the Impact of  
Paternal Mental Health on Children and Families

eLearning: ICON – Abusive Head Trauma Prevention Programme

eLearning: Keeping Our Children Safe From Button Batteries

eLearning: Safeguarding Infants Toolkit

# SAFEGUARDING UNDER ONES

## AN INTRODUCTION TO SAFEGUARDING INFANTS



Hampshire  
**Safe**guarding  
**Children**  
Partnership

**Delivered by:** HSCP Partnership Manager, Named Nurse  
Safeguarding Children (HHFT)

**Delivery method:** Virtual

**Duration:** 1.5 hours

### LEARNING OUTCOMES

- **Develop an awareness of the vulnerabilities of infants, including the emerging themes from both local reviews and National Child Safeguarding Practice Reviews**
- **Gain an understanding of Hampshire Safeguarding Children Partnership's initiatives to safeguard and protect infants**
- **Develop confidence to apply Hampshire Safeguarding Children Partnership's policies, procedures and toolkits in practice**
- **Apply this learning to your own practice**

PLEASE CLICK ON THE LINKS BELOW TO BOOK YOUR PLACE NOW

### BOOK ON:

[WEDNESDAY 11 DECEMBER 2024 09:30 – 11:00](#)

[WEDNESDAY 05 MARCH 2025 13:30 – 15:00](#)

# SAFEGUARDING UNDER ONES

## AN INTRODUCTION TO SAFE SLEEP



Hampshire  
**Safe**guarding  
**Children**  
Partnership

**Delivered by:** HSCP Partnership Manager

**Delivery method:** Virtual

**Duration:** 1.5 hours

### LEARNING OUTCOMES

- Understand the importance of safe sleep and what it is
- Understand why certain environments may not be a safe place for a baby to sleep
- Explain the criminal charge of overlying
- Understand the risk factors associated with Sudden Infant Death Syndrome
- Understand the importance of a multi-agency approach
- Support the workforce to deliver the safe sleep message to parents and carers

PLEASE CLICK ON THE LINKS BELOW TO BOOK YOUR PLACE NOW

**BOOK ON:**

[WEDNESDAY 29 JANUARY 2025 13:30 – 15:00](#)

# SAFEGUARDING UNDER ONES

## PERINATAL HEALTH AND THE IMPACT ON THE CHILD

LUNCHTIME LEARNING



Hampshire  
**Safeguarding**  
**Children**  
Partnership

**Delivered by:** Perinatal Mental Health Service, Southern Health NHS Foundation Trust  
**Delivery method:** Virtual  
**Duration:** 1 hour

### LEARNING OUTCOMES

- **Develop a better understanding of perinatal mental health and the impact this has on parents and baby**
- **Learn about common mental illnesses in the perinatal period**
- **Understand the risks to parents and baby during this period**
- **Identify protective and risk factors**
- **Learn what support is available for parents and babies**

PLEASE CLICK ON THE LINKS BELOW TO BOOK YOUR PLACE NOW

**BOOK ON:**

[WEDNESDAY 05 FEBRUARY 2025 12:00 – 13:00](#)

# SAFEGUARDING UNDER ONES

## ENGAGING FATHERS AND PATERNAL MENTAL HEALTH

LUNCHTIME LEARNING



Hampshire  
**Safe**guarding  
**Children**  
Partnership

**Delivered by:** Southern Health Foundation Trust  
Professionals

**Delivery method:** Virtual

**Duration:** 1 hour

### LEARNING OUTCOMES

- **Appreciate the role of fathers in the context of today's society**
- **Consider how services can engage with fathers**
- **Create awareness of the importance of good paternal mental health and the impact on families**
- **Have an awareness of contemporary policy and research related to paternal mental health, appreciating how it applies to practice at a local level**
- **Appreciate the effects and impact of paternal mental illness on the father/partner, from pregnancy across the child's life course, including the father-infant and wider family relationships**
- **Understand some of the challenges and risks in identifying and supporting families affected by paternal mental health problems, including stigma, drugs and alcohol, cultural considerations, domestic violence and abuse and safeguarding concerns**
- **Be clear about your responsibilities in relation to paternal mental health, including the need for timely referral, appreciating how your role fits with others along the care pathway**
- **Feel confident to engage with fathers to support their mental wellbeing and develop father inclusive services**

PLEASE CLICK ON THE LINKS BELOW TO BOOK YOUR PLACE NOW

**BOOK ON:**

[WEDNESDAY 20 NOVEMBER 2024 12:00 – 13:00](#)

# SAFEGUARDING UNDER ONES

## E-LEARNING COURSES



Hampshire  
**Safe**guarding  
**Children**  
Partnership



| Course   | Course Description  |
|--|---|
| <a href="#">eLearning: ICON – Abusive Head Trauma Prevention Programme</a> | ICON is a programme of intervention to prevent abusive head trauma in babies based around coping with crying. The programme requires the same messages are shared with parents and carers at different stages by different professionals. This eLearning will support professionals' understanding of the risks of abusive head trauma and to share the key messages to help parents and carers when coping with a crying baby. |
| <a href="#">eLearning: Keeping Our Children Safe From Button Batteries</a> | This eLearning course provides information and advice about keeping children safe from button batteries.  |
| <a href="#">eLearning: Safeguarding Infants Toolkit</a>                    | This eLearning provides an overview of the Safeguarding Infants Toolkit. It can be undertaken by any professional working with families in Hampshire.   |



Hampshire  
**Safe**guarding  
**Children**  
Partnership

# SERIOUS VIOLENCE

---



# SERIOUS VIOLENCE

## INTRODUCTION TO THE SERIOUS VIOLENCE DUTY

New For  
2024/25



Delivered by: Hampshire & IOW Constabulary  
Delivery method: Virtual  
Duration: 1 hour

### LEARNING OUTCOMES

- Understand what the Serious Violence Duty means to you and your organization.
- Gain an overview of the public health approach and why it is important.
- Apply your learning from theory to practice using real-life case studies.
- Access further information and resources to support you in your role.

PLEASE CLICK ON THE LINKS BELOW TO BOOK YOUR PLACE NOW

**BOOK ON:**

[23 October 2024 13.30 – 15.00](#)

[12 February 2025 09.30 – 11.00](#)



Hampshire  
**Safe**guarding  
**Children**  
Partnership

# UNDERSTANDING UNIDENTIFIED ADULTS

---

Understanding Unidentified Adults

eLearning: Understanding Unidentified Adults Toolkit

eLearning: Understanding Unidentified Adults

# UNDERSTANDING UNIDENTIFIED ADULTS

## UNDERSTANDING UNIDENTIFIED ADULTS

LUNCHTIME LEARNING



Hampshire  
**Safe**guarding  
**Children**  
Partnership

**Delivered by:** HSCP Partnership Manager

**Delivery method:** Virtual

**Duration:** 1 hour

### LEARNING OUTCOMES

- Support professionals to understand the importance of engaging adults who live with or regularly care for children
- Understand the benefits and risks of other adults living in the household/caring for children
- Understand the barriers to engagement and how practitioners can engage with children and families
- Provide general principles and top tips which can be utilised within multi-agency partner practice

PLEASE CLICK ON THE LINKS BELOW TO BOOK YOUR PLACE NOW

**BOOK ON:**

[WEDNESDAY 13 NOVEMBER 2024 12:00 – 13:00](#)

# UNDERSTANDING UNIDENTIFIED ADULTS



Hampshire  
**Safe**guarding  
**Children**  
Partnership

## E-LEARNING COURSES



| Course   | Course Description   |
|--|--|
| <a href="#">eLearning: Understanding Unidentified Adults Toolkit</a> | This eLearning provides an overview of the Understanding Unidentified Adults Toolkit. It can be undertaken by any professional working with families in Hampshire.   |
| <a href="#">eLearning: Understanding Unidentified Adults</a>         | The term 'Unidentified Adults' refers to an adult who agencies are not aware of, or not engaging with, who may be providing care for a child(ren) or providing support to a family. They could be living within a household where children live or with someone who has regular contact with children. This can be in any capacity (such as parent, partner, grandparents, non-family member etc.). This eLearning will support you in understanding the importance of knowing who has caring responsibilities for a child, and how as a professional you can identify and engage with them. |